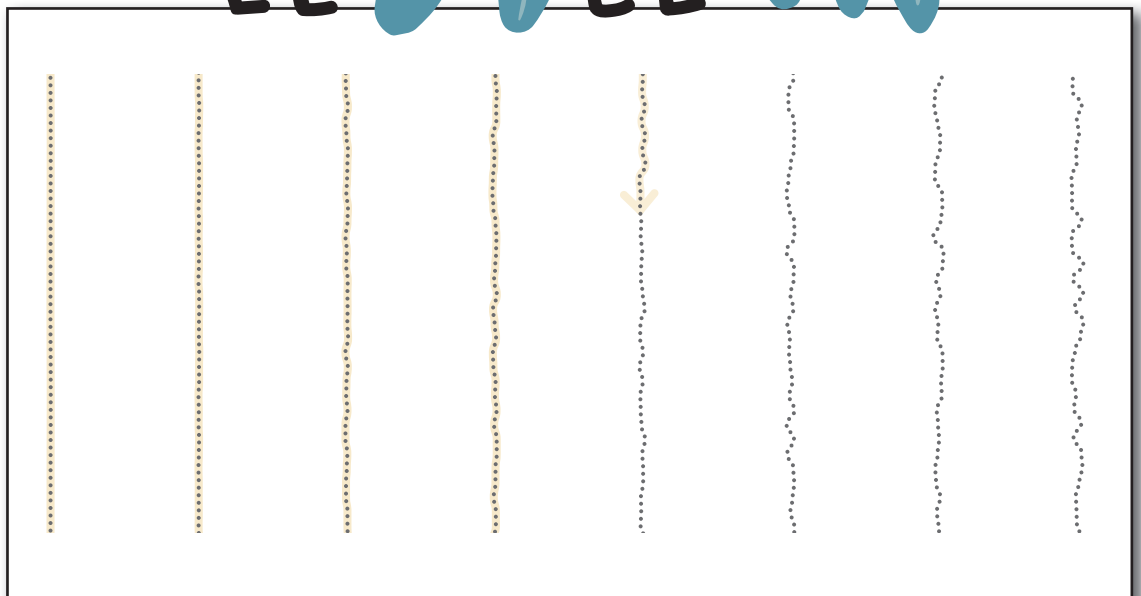


4.4

BASIC TRACING AND CONNECTING

Tracing Straight
and Irregular Lines



dr. Kristijan Musek Lešnik, dr. Petra Lešnik Musek

BASIC TRACING AND CONNECTING TRACING STRAIGHT AND IRREGULAR LINES

dr. Kristijan Musek Lešnik
dr. Petra Lešnik Musek

Workbook title: BASIC TRACING AND CONNECTING: Tracing straight and irregular lines
BrainscribED Resources for Visual-Motor Integration and Graphomotor Skills Development

Copyright © 2024 Kristijan Musek Lešnik, Petra Lešnik Musek
All rights reserved.

No part of this book may be reproduced or used in any manner without the prior written permission of the copyright owners.

Members/subscribers of the BrainscribED Home Program may print and use individual worksheets from this workbook for home use within the household for the duration of their membership.

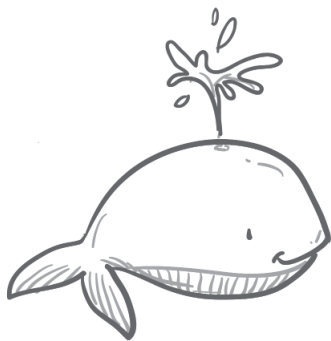
Illustrations: Daniela Barreto, Shutterstock
Front cover illustrations: los_ojos_pardos, Shutterstock
First paperback edition, 2024
Some of the worksheets first published in e-form in 2009
Number of pages: 104



BrainscribED workbooks help children develop and strengthen their visual-motor integration and graphomotor skills!

Published by:
IPSOS dr. Kristijan Musek Lešnik s.p.
Požarnice 26d, SI-1351 Brezovica pri Ljubljani
www.brainscribed.com

TRACE THE LINES.



TRACE THE LINES.

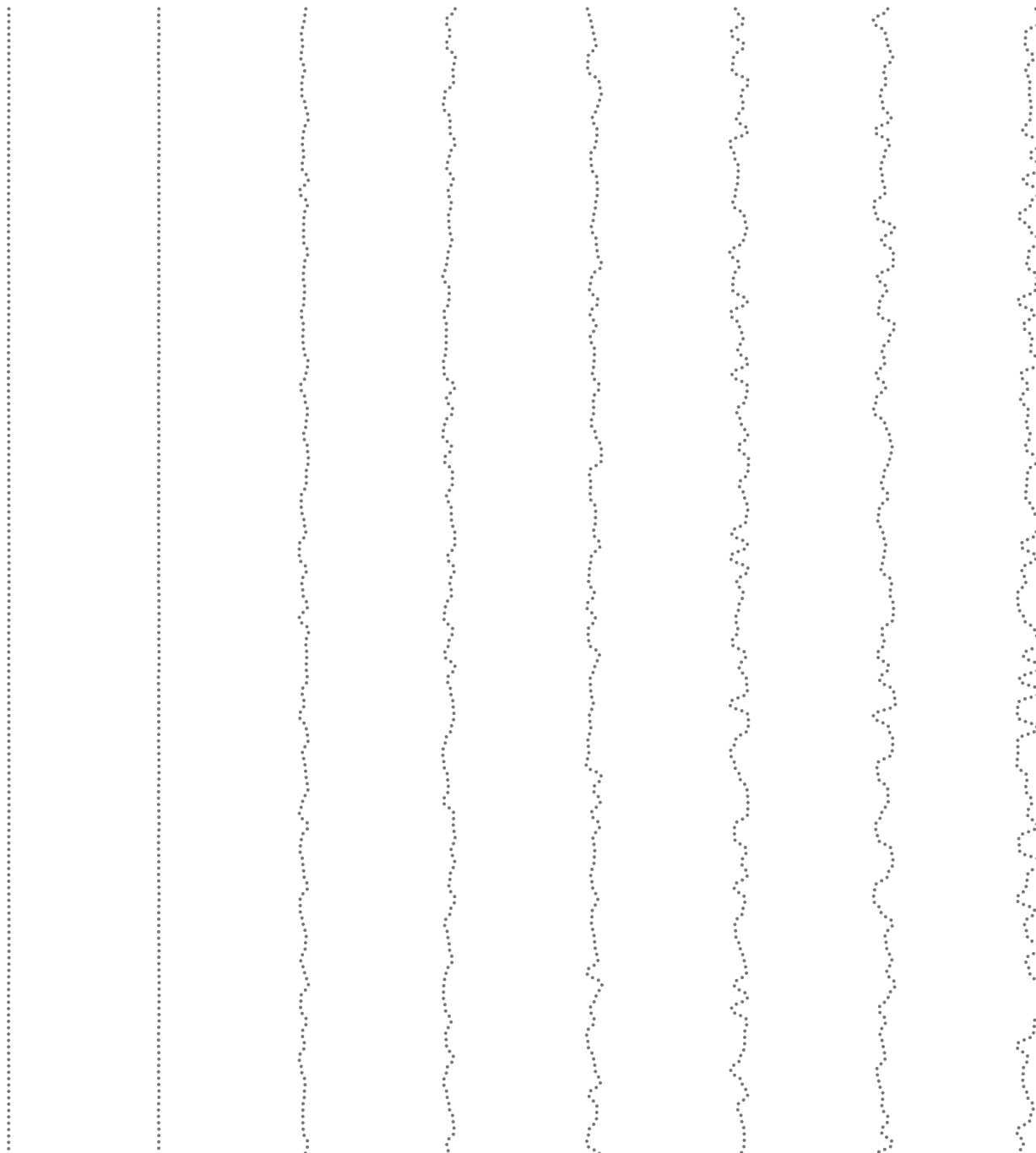


Tracing practice area containing ten horizontal lines. The first two lines are straight dotted lines. The remaining eight lines are irregular, wavy dotted lines of varying patterns, designed for tracing practice.

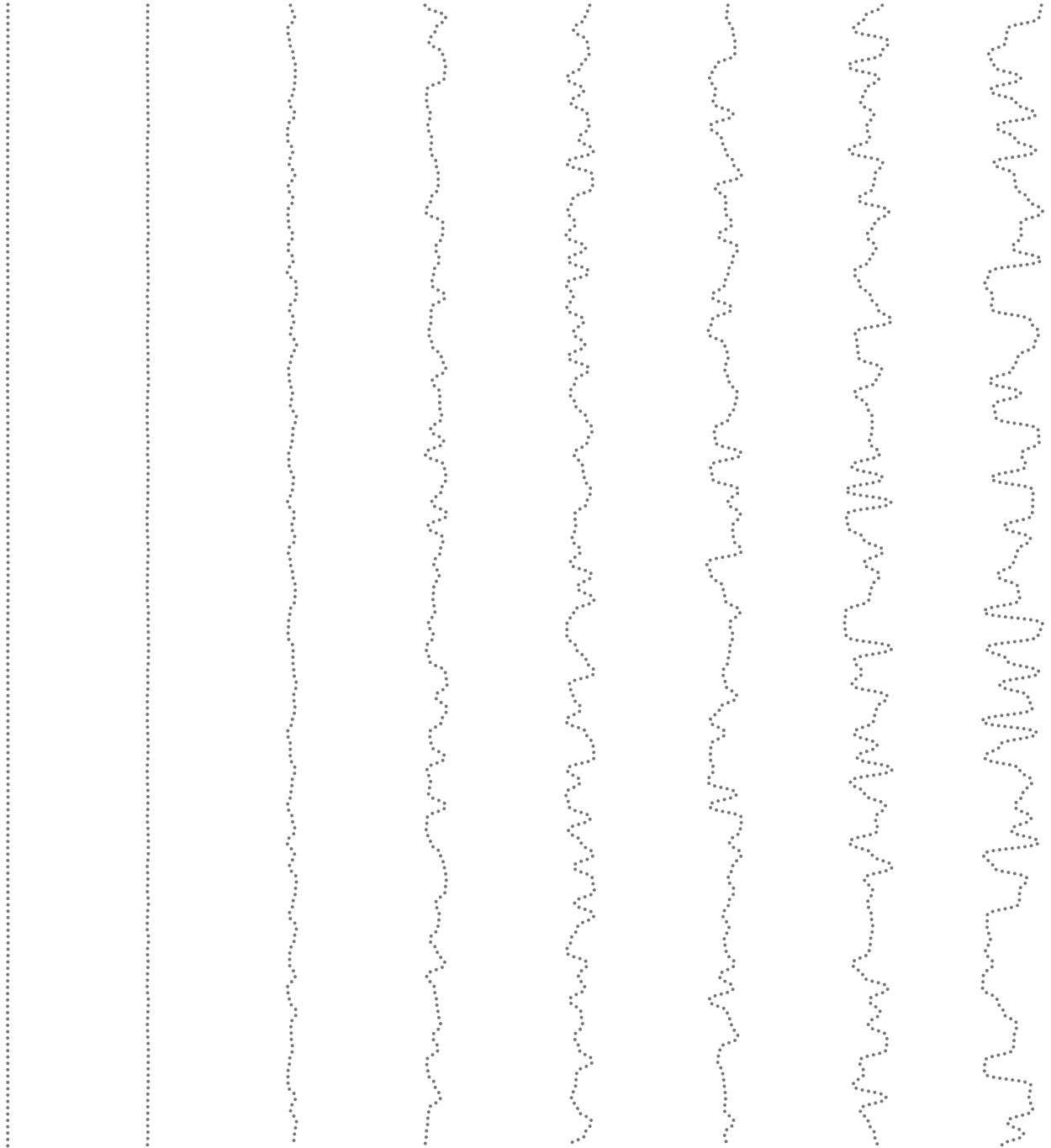
TRACE THE LINES.



TRACE THE LINES.



TRACE THE LINES.



Tracing activities stimulate child's eye - hand coordination. When children follow dotted lines or other kind of lines with drawing tools, they simultaneously follow and compare their evolving lines with original ones. This process strengthens visual-motor integration and fine-motor hand and fingers movements control.

The activities in this workbook are designed to strengthen children's graphomotor skills by tracing different straight and irregular lines, which are drawn as sets of dots that vary in length and spacing. These tasks stimulate the acquisition of basic graphomotor, fine-motor and pre-description skills and competences, which play an essential role in the development of writing and other important fine-motor skills.

What the science says about visual motor training?

Science fact:

Visual-motor exercises create functional connections among visual and motor regions in brains.

Science fact:

Interrelation between fine motor skills, non-verbal intelligence and executive functioning.

Science fact:

Visual-motor exercises improve graphomotor skills which are important predictors of later academic achievement.

EXTENSIVE
collection
of **TASKS** and
ACTIVITIES
for
EVERY child
and for
children with
DIFFICULTIES
designed by
EXPERTS
for **PARENTS**
and **EXPERTS**

About BrainscribED Workbooks Collection

A **comprehensive** collection of **5.600 +** worksheets and **30.000 +** activities aimed at helping the development of visual-motor integration and graphomotor skills in children.

Visual-motor integration development is stimulated by **fun** and **user friendly** activities tailored for children at different developmental stages and levels of skills.

Every child's visual motor integration and skills development can **benefit** from graphomotor/visual-motor tasks and training at home or in a classroom.

Teachers and other professionals working with children with visual motor integration problems or/and with writing problems will find a plentitude of useful and engaging tasks for a **systematic intervention** in BrainscribED workbooks.

BrainscribED workbooks provide **parents** with developmentally appropriate and gradually challenging tasks for their children as well as they offer **teachers** and other **experts** (preschool, school, special education, therapy, etc.) appropriate and gradually challenging tasks according to developmental needs of their children.

Types of Brainscribe Activities

